

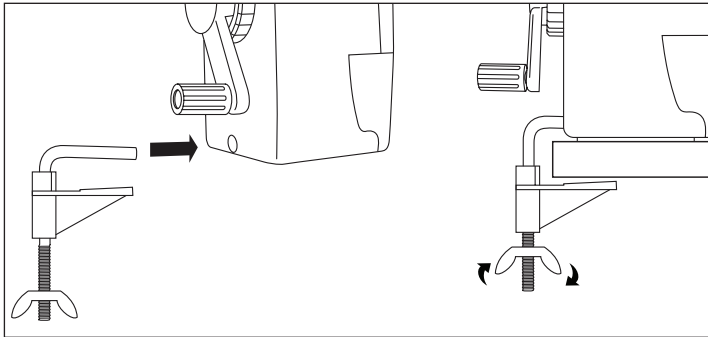
# Manual Pencil Sharpener Operating Instructions

Please read the following instructions before operating your sharpener.

**To be used under adult supervision only**

## Using the Desk Clamp

Place the sharpener on a flat surface near the edge of the desk. Secure it in place with the desk clamp.



## Cleaning

Regular cleaning will ensure that your sharpener operates efficiently.

1. Use a small brush (e.g. thick paintbrush or toothbrush) to clean the cutting blade. Never use metal objects as this may damage the cutting blade.
2. The shavings tray can be removed and cleaned with water only, but ensure it is fully dry before reusing.
3. Do not clean the main sharpener unit with water or any other liquids.

## Coloured Pencils

1. Sharpening coloured pencils causes wax to build up on the cutting blade.
2. We recommend alternating between coloured and graphite pencils as graphite will help to clean the blade, as well as regular cleaning as per the instructions above.

**RAPESCO**<sup>®</sup>  
worldwide

Model	Product Code	Compatible Pencil Size
94	R94000B2	8-11mm



## How to Operate

1. Pull the front plate, above the shaving tray out until it locks into position.
2. Squeeze the two tab buttons together and insert the pencil.
3. Turn the handle **clockwise** to sharpen the pencil. The auto stop feature will stop sharpening the pencil when it has reached the preferred sharpness, and the handle will turn more freely.
4. Press the two tab buttons together to remove the pencil.
5. Empty the shavings tray frequently by pulling it out from the main sharpener unit.